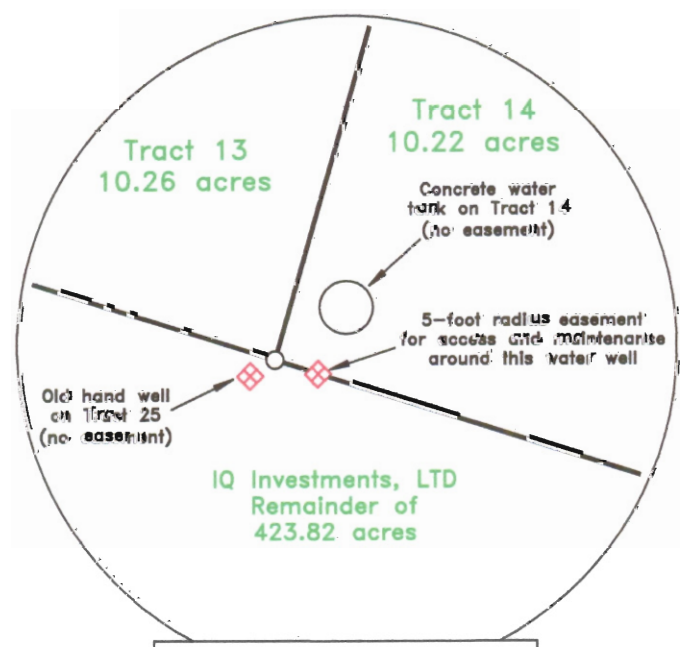
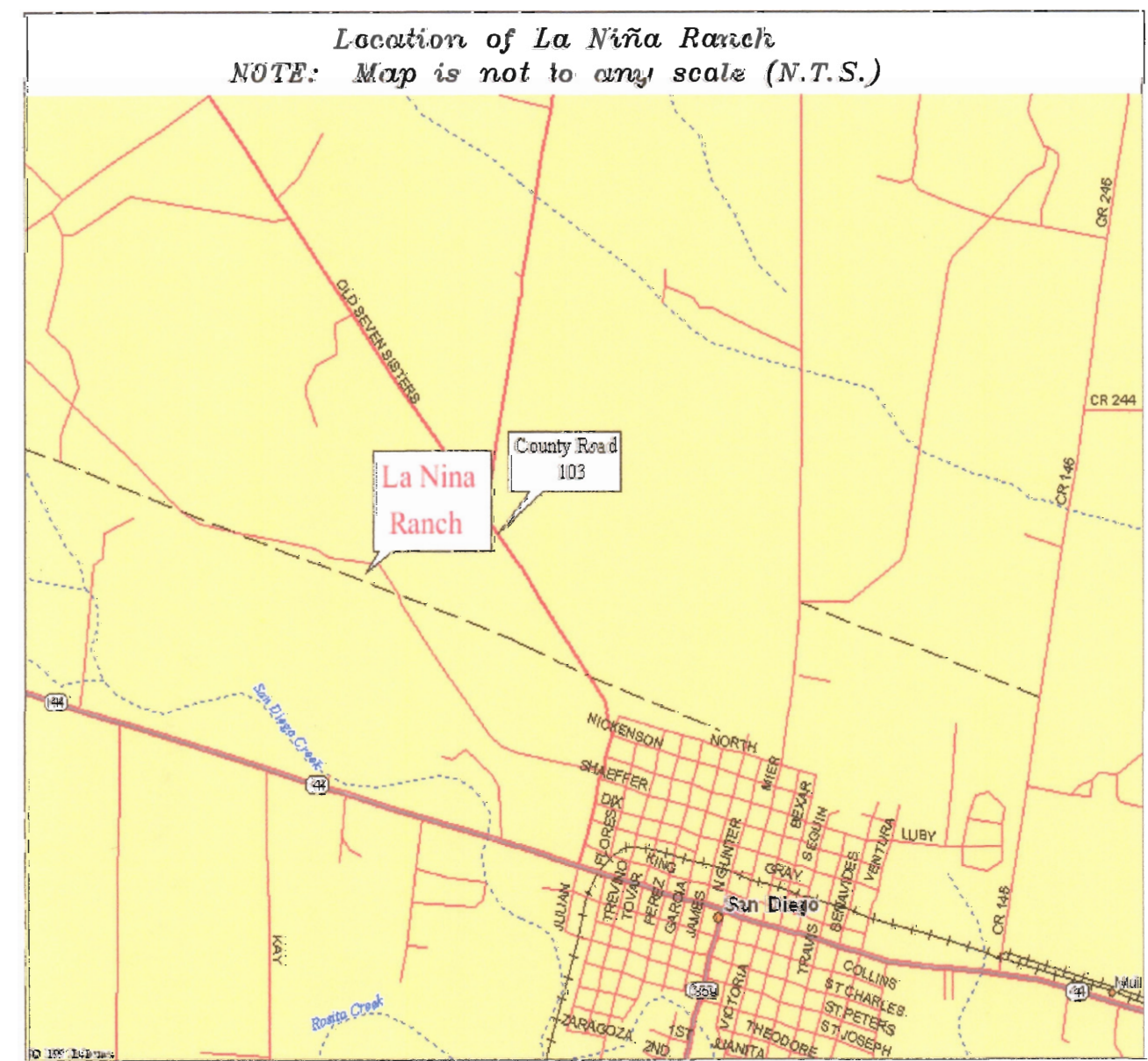
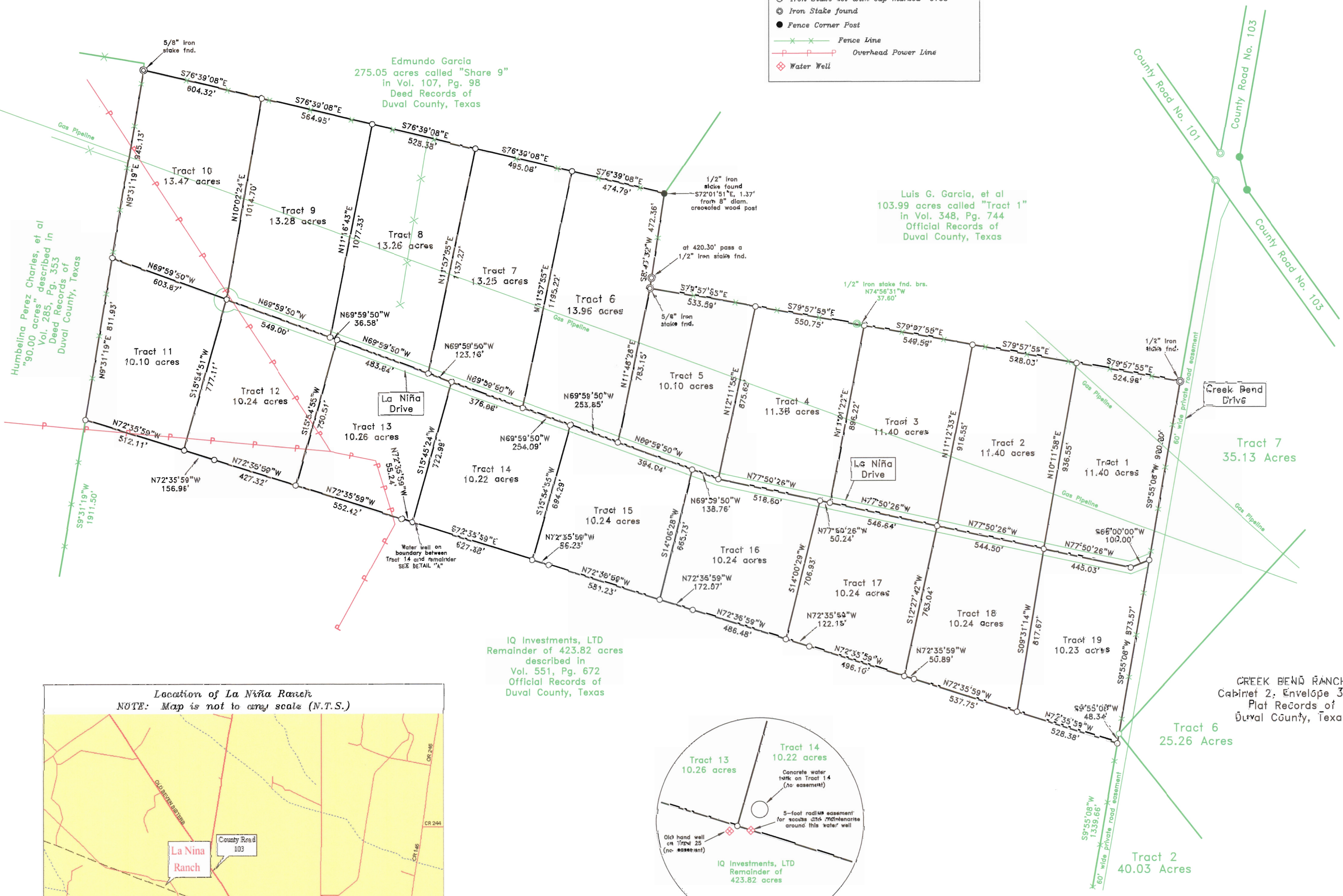


BEARING NOTATION
Bearing Basis derived from GPS observations in the State Plane Coordinate System, NAD 1983 Texas South 4206 Zone, made on April 19, 2012, with all other bearings relative thereto.

NOTES:
Roads shown hereon shall be PRIVATE road easements sixty (60) feet in width, thirty (30) feet either side of centerline.
All cul-de-sacs shown hereon shall have a radius of sixty (60) feet.
Tract 14 has a 1/2 interest in water well located on its south boundary. 1/2 interest has been reserved by IQ Investments, its successors, or assigns.
This property is subject to all easements and other matters of record in the Official Records of Duval County, Texas.

LEGEND	
○	Iron Stake set with cap marked "6169"
⊙	Iron Stake found
●	Fence Corner Post
—x—x—	Fence Line
—P—P—	Overhead Power Line
⊠	Water Well



DETAIL "A"
SCALE 1 INCH EQUALS 50.00 FEET

IQ Investments, LTD
Remainder of 423.82 acres
described in
Vol. 551, Pg. 672
Official Records of
Duval County, Texas

CREEK BEND RANCH
Cabinet 2, Envelope 38-
Plat Records of
Duval County, Texas